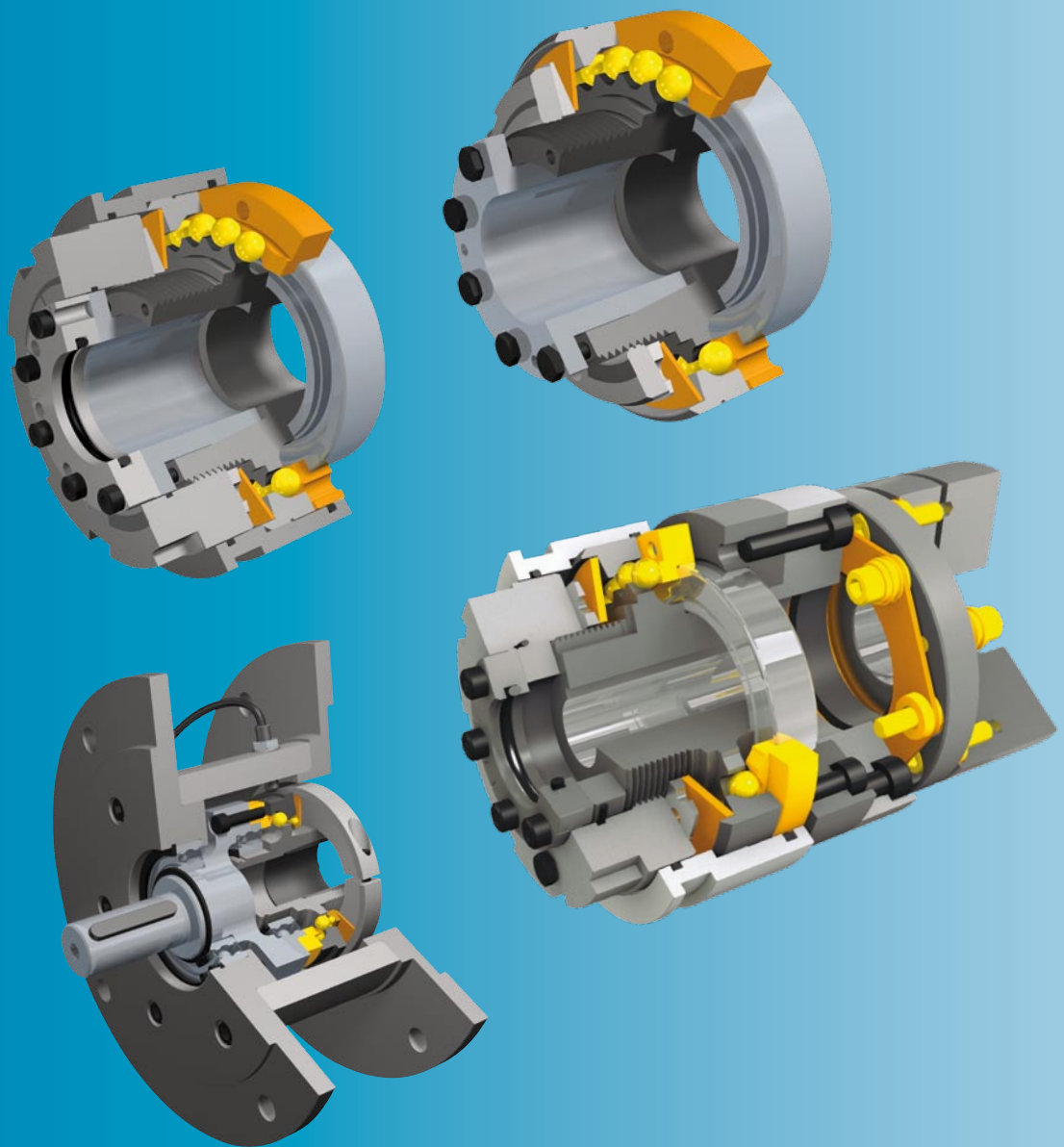


Corrosion-resistant torque limiting clutches



www.mayr.com

IMG.401.V03.GB

mayr[®]
your reliable partner

What is your definition of reliability?

We define reliability as the highest product quality and competent service from the initial contact right up to the after-sale service

- ☐ Largest variety in selection of standard products
- ☐ Market leader's competence arising from decades of experience in the development, production and application of power transmission products
- ☐ Optimum product choice due to our experts' designs and calculations
- ☐ Reliable component dimensioning
- ☐ Intelligent platform (modular construction)
- ☐ High flexibility for individual requests and customer-tailored solutions
- ☐ Quality-inspected suppliers
- ☐ Modern, highly robust materials
- ☐ 100% quality control
- ☐ Certified according to DIN EN ISO 9001:2000
- ☐ Personal supervision from the first contact right up to the after-sale service
- ☐ Worldwide local service network
- ☐ CAD-files available online to save time and costs during construction
- ☐ 24-hour delivery service for preferred products
- ☐ Short delivery times and on-time delivery
- ☐ Unlimited replacement part availability worldwide



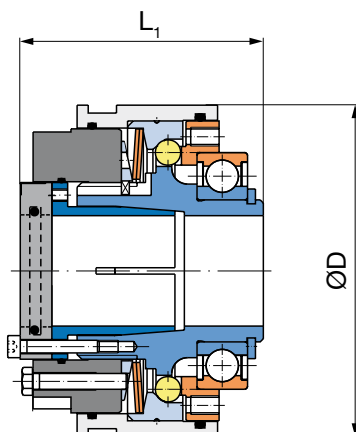
EAS®-Compact® sealed

Completely made of stainless steel, with seal ¹⁾

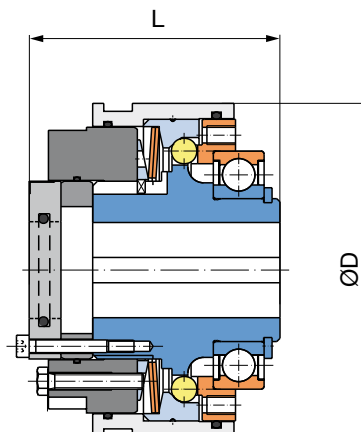


Performance characteristics

- No penetration of cleaning liquids or any other media, no emission of grease
- Completely closed due to rustproof seal
- Synchronous function
- Automatic re-engagement
- Mechanical separation of input and output in case of overload
- Precise torque limitation with high disengagement and repetitive accuracies
- Permanent backlash-free torque transmission
- Low mass moment of inertia due to compact design
- Long service life due to hardened functional components
- Use of lubricants with approval for the food industry



Hub with cone bushing



Hub with keyway

Technical Data				Size			
				0	1	2	3
Limit torques for overload	with cone bushing or keyway	M_G	[Nm]	10 – 50	20 – 100	40 – 200	70 – 350
	with keyway	M_G	[Nm]	40 – 100	80 – 200	160 – 400	280 – 700
Max. Speed		n_{max}	[rpm]	3000	2500	2000	1200
Thrust washer stroke on overload			[mm]	1,5	1,8	2,0	2,2
Length	L		[mm]	64	77	83	98
	L_1		[mm]	64	79	84	99
Outer-Ø	D		[mm]	90	105	120	140

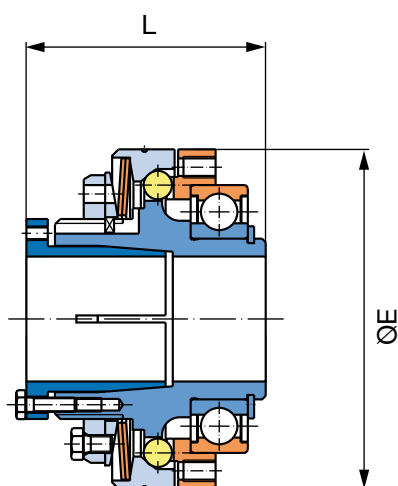
1) Cup spring with high-quality corrosion protection

EAS®-Compact® rustproof Completely made of stainless steel ¹⁾

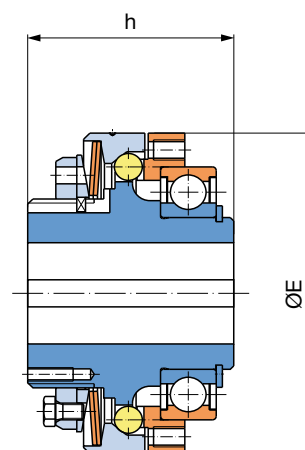


Performance characteristics

- Identical in design with the EAS®-Compact® standard
- Synchronous function
- Automatic re-engagement
- Mechanical separation of input and output in case of overload
- Precise torque limitation with high disengagement and repetitive accuracies
- Permanent backlash-free torque transmission
- Low mass moment of inertia due to compact design
- Long service life due to hardened functional components
- Use of lubricants with approval for the food industry



Hub with cone bushing



Hub with keyway

Technical Data				Size			
				0	1	2	3
Limit torques for overload	with cone bushing or keyway	M _G	[Nm]	10 – 50	20 – 100	40 – 200	70 – 350
	with keyway	M _G	[Nm]	40 – 100	80 – 200	160 – 400	280 – 700
Max. speed		n _{max}	[rpm]	3000	2500	2000	1200
Trust washer stroke on overload			[mm]	1,5	1,8	2,0	2,2
Length	L		[mm]	56	77	83	98
	h		[mm]	48	59	64	75
Outer-Ø	E		[mm]	80	95	110	130

¹⁾ Cup spring with high-quality corrosion protection

For detailed technical data and dimensions, please see catalogue:

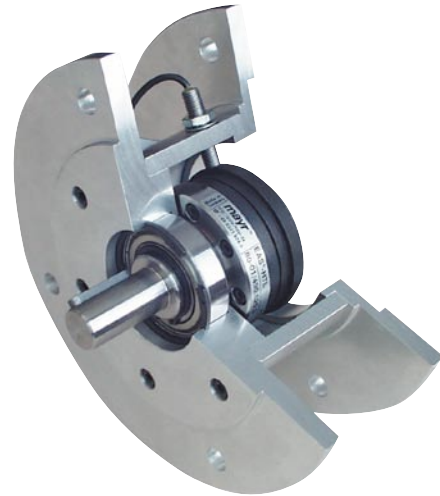
EAS®-Compact®-R
www.mayr.com

P.49A.V_..GB

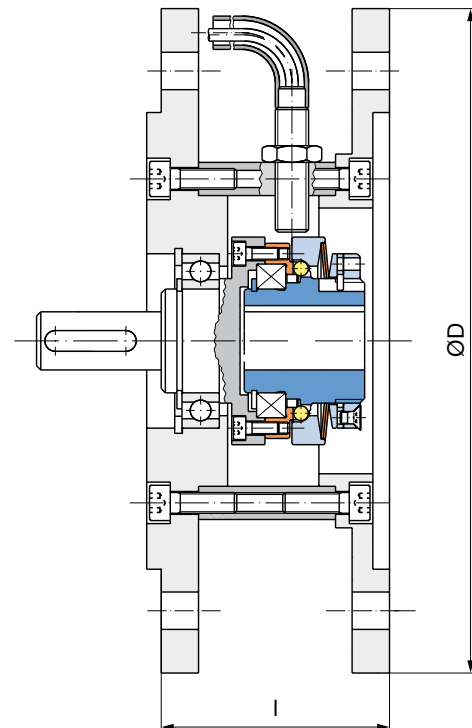
Torque limiting clutch integrated in IEC und NEMA housing

Performance characteristics

- EAS®-Compact® in a housing with IEC or NEMA flanges (housing protection IP53)
- Integrated limit switch for switch-off in case of overload
- Cost-effective, enclosed unit
- Easy installation due to standardised connection dimensions and short design
- Fail-safe and reliable due to protection against mechanical damage, corrosion, penetration of dirt and washing out of grease



Torque limiting clutches in standard design are normally not suitable for application areas, in which moisture, cleaning agents or aggressive media are among the everyday ambient conditions. The EAS®-HTL housed torque limiter is optimally protected to fulfil the service lifetime and functional reliability requirements even under such influences. Due to the standardised connection dimensions, it is possible to integrate the entire unit between the motor and the gearbox without additional constructions.



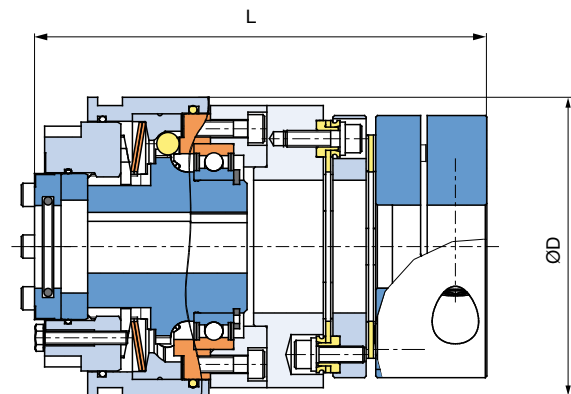
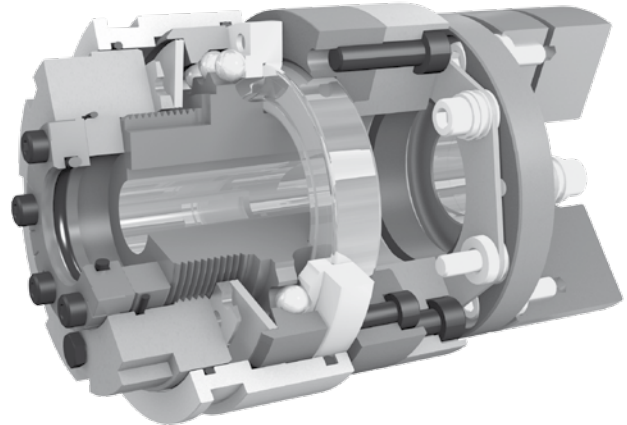
Technical Data and Dimensions				Size	
				Ratchetting/Synchronous clutch	Overload clutch
				IEC 63 – 180	IEC 80 – 280
				NEMA 56C – 256TC	NEMA 56C – 256TC
Limit torque for overload	IEC	M_G	[Nm]	2 – 700	5 – 2400
	NEMA	M_G	[Nm]	5 – 400	5 – 400
Length	IEC	L	[mm]	53 – 126	78 – 252
	NEMA	L	[inch]	3.070" – 5.280"	3.070" – 5.280"
Outer-Ø	IEC	D	[mm]	140 – 350	200 – 550
	NEMA	D	[mm]	180 – 250	180 – 250

EAS®-Compact® rustproof, torsionally rigid

Combined with the rustproof, torsionally rigid shaft coupling ROBA®-DS

Performance characteristics

- Permanently backlash-free torque transmission
- Compensation of angular, axial and radial shaft misalignments via the torsionally rigid shaft coupling ROBA®-DS
- Flexible adjustment of the construction length for the connection of shafts with different shaft distances
- Optimally suited if high torsional spring rigidity or high speed values are required



Technical Data

Limit torques for overload	Type 496.5_..0	M_G	[Nm]	20 – 50
Max. speed		n_{max}	[rpm]	3000
Thrust washer stroke on overload			[mm]	2,6
Nominal torque, torsionally rigid coupling		T_{KN}	[Nm]	125
Permitted misalignments	axial	ΔK_a	[mm]	1,1
	radial	ΔK_r	[mm]	0,2
	angular	ΔK_w	[°]	1
Length		L	[mm]	136,3
Outer-Ø		D	[mm]	90

Mechanical torque limiting clutches are the only reliable means of maximising the productivity and economic efficiency of machines and systems. These clutches prevent damage in case of malfunctions and collisions and therefore also expensive downtimes and repairs.

In the food industry, the chemical industry and in process engineering, there are often ambient conditions, which only torque limiting clutches with high-quality corrosion protection are able to withstand without any damage over long periods of time.

Standard torque limiting clutches are normally not suitable for such application areas, in which moisture, cleaning agents or aggressive media are among the everyday ambient conditions.

mayr® power transmission offers two fundamentally different clutch variants, which are optimally suited for such application fields.

You have the choice between sealed torque limiting clutches or designs made of rustproof materials – normally made of stainless steel.

mayr® offers backlash-free torque limiting clutches in rust-proof design and with different sealing variants.

The sealed designs are not only protected against corrosion, but also against penetration of dirt and moisture as well as against washing out of lubricant.

An advantage, which is especially required and appreciated in sensitive areas of the food industry.



Beverage bottling systems in breweries are cleaned using aggressive media, which could destroy standard clutches without corrosion protection within a short period of time.



EAS®-Compact® rustproof with contactless limit switch in a filling machine for cream cheese.



Headquarters

Chr. Mayr GmbH + Co. KG
Eichenstrasse 1, D-87665 Mauerstetten
Tel.: 0 83 41/8 04-0, Fax: 0 83 41/80 44 21
www.mayr.com, E-Mail: info@mayr.com



mayr®

Service Germany

Baden-Württemberg

Esslinger Straße 7
 70771 Leinfelden-Echterdingen
 Tel.: 07 11/45 96 01 0
 Fax: 07 11/45 96 01 10

Bavaria

Eichenstrasse 1
 87665 Mauerstetten
 Tel.: 0 83 41/80 41 04
 Fax: 0 83 41/80 44 23

Chemnitz

Bornaer Straße 205
 09114 Chemnitz
 Tel.: 03 71/4 74 18 96
 Fax: 03 71/4 74 18 95

Franken

Unterer Markt 9
 91217 Hersbruck
 Tel.: 0 91 51/81 48 64
 Fax: 0 91 51/81 62 45

Hagen

Im Langenstück 6
 58093 Hagen
 Tel.: 0 23 31/78 03 0
 Fax: 0 23 31/78 03 25

Kamen

Lünener Strasse 211
 59174 Kamen
 Tel.: 0 23 07/23 63 85
 Fax: 0 23 07/24 26 74

North

Schiefer Brink 8
 32699 Extertal
 Tel.: 0 57 54/9 20 77
 Fax: 0 57 54/9 20 78

Rhine-Main

Hans-Böckler-Straße 6
 64823 Groß-Umstadt
 Tel.: 0 60 78/7 82 53 37
 Fax: 0 60 78/9 30 08 00

Branch office

China

Mayr Zhangjiagang
 Power Transmission Co., Ltd.
 Changxing Road No. 16,
 215600 Zhangjiagang
 Tel.: 05 12/58 91-75 65
 Fax: 05 12/58 91-75 66
 info@mayr-ptc.cn

Great Britain

Mayr Transmissions Ltd.
 Valley Road, Business Park
 Keighley, BD21 4LZ
 West Yorkshire
 Tel.: 0 15 35/66 39 00
 Fax: 0 15 35/66 32 61
 sales@mayr.co.uk

France

Mayr France S.A.
 Z.A.L. du Minopole
 BP 16
 62160 Bully-Les-Mines
 Tel.: 03.21.72.91.91
 Fax: 03.21.29.71.77
 contact@mayr.fr

Italy

Mayr Italia S.r.l.
 Viale Veneto, 3
 35020 Saonara (PD)
 Tel.: 0 49/8 79 10 20
 Fax: 0 49/8 79 10 22
 info@mayr-italia.it

Singapore

Mayr Transmission (S) PTE Ltd.
 No. 8 Boon Lay Way Unit 03-06,
 TradeHub 21
 Singapore 609964
 Tel.: 00 65/65 60 12 30
 Fax: 00 65/65 60 10 00
 info@mayr.com.sg

Switzerland

Mayr Kupplungen AG
 Tobelackerstrasse 11
 8212 Neuhausen am Rheinfall
 Tel.: 0 52/6 74 08 70
 Fax: 0 52/6 74 08 75
 info@mayr.ch

USA

Mayr Corporation
 4 North Street
 Waldwick
 NJ 07463
 Tel.: 2 01/4 45-72 10
 Fax: 2 01/4 45-80 19
 info@mayrcorp.com

Representatives

Australia

Transmission Australia Pty. Ltd.
 22 Corporate Ave,
 3178 Rowville, Victoria
 Australien
 Tel.: 0 39/7 55 44 44
 Fax: 0 39/7 55 44 11
 info@transaus.com.au

China

Mayr Power Transmission Co., Ltd.
 Shanghai Representative Office
 Room 2206, No. 888 Yishan Road
 200233 Shanghai, VR China
 Tel.: 0 21/64 32 01 60
 Fax: 0 21/64 57 56 21
 Trump.feng@mayr.de

India

National Engineering
 Company (NENCO)
 J-225, M.I.D.C.
 Bhosari Pune 411026
 Tel.: 0 20/27 13 00 29
 Fax: 0 20/27 13 02 29
 nenco@nenco.org

Japan

MATSUI Corporation
 2-4-7 Azabudai
 Minato-ku
 Tokyo 106-8641
 Tel.: 03/35 86-41 41
 Fax: 03/32 24 24 10
 k.goto@matsui-corp.co.jp

South Africa

Torque Transfer
 Private Bag 9
 Elandsfontein 1406
 Tel.: 0 11/8 99 00 00
 Fax: 0 11/8 99 65 74
 torque@bearings.co.za

South Korea

Mayr Korea Co. Ltd.
 Room No.1002, 10th floor,
 Nex Zone, SK TECHNOPARK,
 77-1, SungSan-Dong,
 SungSan-Gu, Changwon, Korea
 Tel.: 0 55/2 62-40 24
 Fax: 0 55/2 62-40 25
 info@mayrkorea.com

Taiwan

German Tech Auto Co., Ltd.
 No. 28, Fenggong Zhong Road,
 Shengang Dist.,
 Taichung City 429, Taiwan R.O.C.
 Tel.: 04/25 15 05 66
 Fax: 04/25 15 24 13
 abby@zfgta.com.tw

Machine tools

Applications in China
 Dynamic Power Transmission Co., Ltd.
 Block 5th, No. 1699, Songze Road,
 Xujing Industrial Zone
 201702 Shanghai, China
 Tel.: 021/59883978
 Fax: 021/59883979
 dtcshanghai@online.sh.cn

More representatives:

Austria, Benelux States, Brazil, Canada, Czech Republic, Denmark, Finland, Greece, Hongkong, Hungary, Indonesia, Israel, Malaysia, New Zealand, Norway, Philippines, Poland, Romania, Russia, Slovakia, Slovenia, Spain, Sweden, Thailand, Turkey

You can find the complete address for the representative responsible for your area under www.mayr.com in the internet.

mayr®
 your reliable partner

04/09/2012 GC/SC